



Allegro[®]

Progressive imaging access

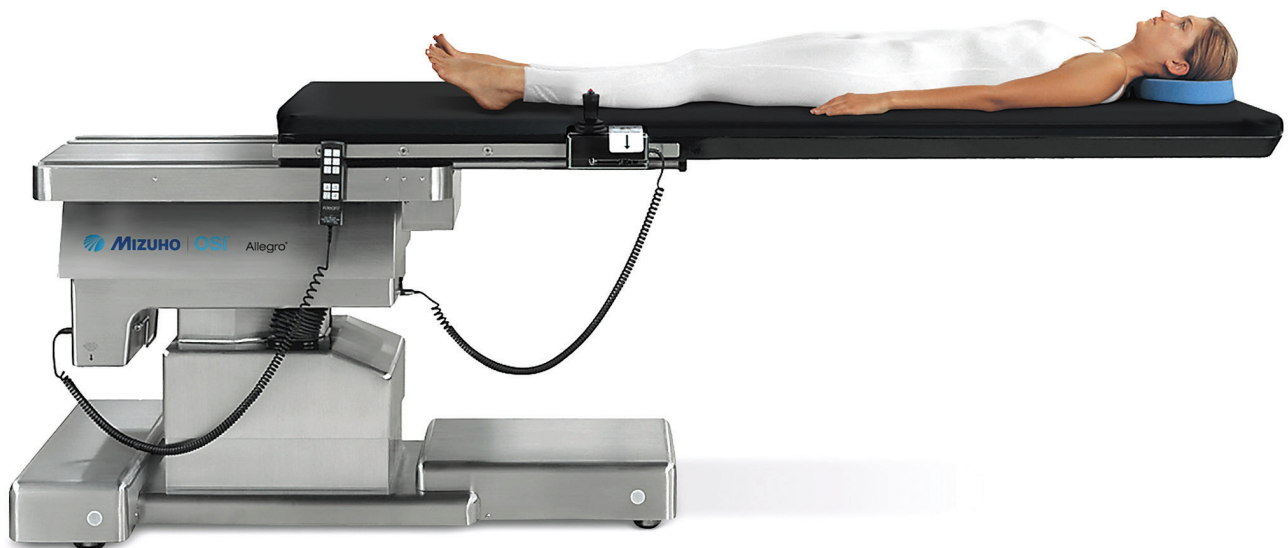


Progressive. Precise.

The **Allegro**[®] advanced imaging table offers surgeons precise control and excellent surgical access for progressive, minimally invasive image-guided procedures. Its four-way motorized table top movement enables flexibility in positioning patients in supine, prone or lateral positions with no need to move the top manually.



450 lbs.
weight capacity (205 kg)



Allegro® Features

A. Variable Speed Control

For ease of use, the Allegro table has Audible Speed Recognition (ASR) as well as Interactive Proportional Speed Control (IPSC). It offers a 2-speed joystick controller which mounts on either side of the table for optimal ease of use.

B. Superior Imaging

The Allegro table provides complete edge-to-edge radiolucency with excellent C-arm access. Radiolucent arm boards also facilitate clear, angiographic studies of the arms.

C. Auxiliary Clamp

Auxiliary clamp mounts where needed on the cantilever of the table to provide 6 inches (15 cm) of side rail.

D. Swivel Mount Hand Pendant

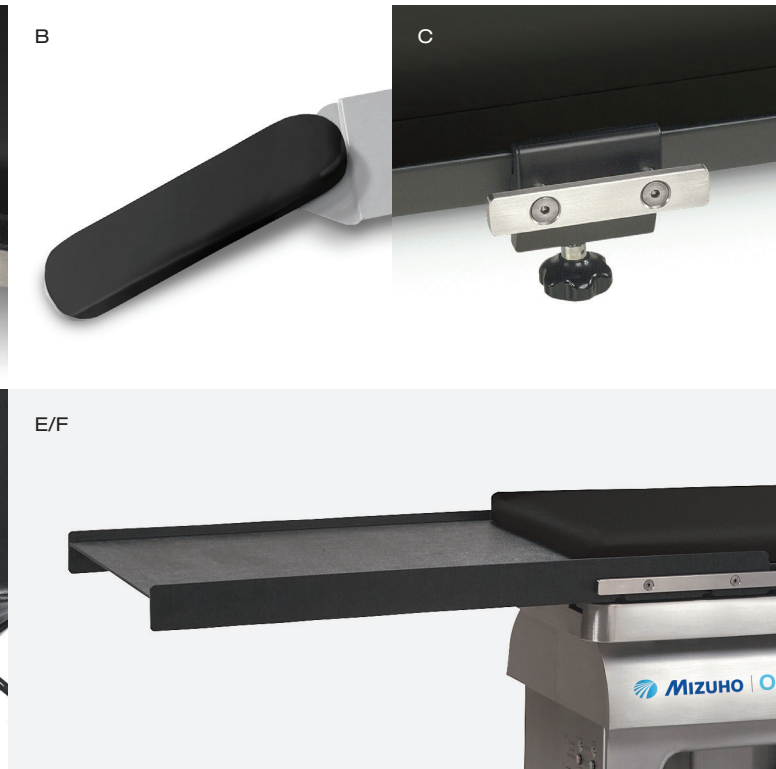
Hand pendant offers flexibility in controlling table functions including X/Y translation of table top. The pendant can be hung on the side rail or positioned horizontally.

E. Stent Tray

Stent Tray securely supports guide wires, catheters and stents and moves with the table top.

F. Tempur-Pedic® Medical Pad Technology

Tempur-Pedic pads equalize pressure load on the patient during surgery and contour to the anatomy, providing improved support.



Specifications & Components



Specifications

Table Top Length	86 in. (218 cm)
Table Top Width	21 in. (53 cm)
Clear Imaging Area	50 in. (127 cm)
Total Imaging Area	71 in. (180 cm)
Table Top Height Range	30 in. - 40 in. (76 cm - 102 cm)
Lateral Roll	20° Degrees
Trendelenburg	15° Degrees
Reverse Trendelenburg	15° Degrees
Longitudinal Top Travel	21 in. (53 cm)
Lateral Top Travel	10 in. (25 cm)
Patient Weight Capacity	450 lbs. (205 kg)

Ordering Information

REF 6800 Allegro® Mobile Imaging Table
120V, 60Hz

REF 6800I Allegro® Mobile Imaging Table
220-230V, 50/60Hz

Standard Components

- Tempur-Pedic® Medical 2 in. (5 cm) Table Top Pad
- Joystick with Interactive Proportional Speed Control®
- Variable 2-Speed Motor Drive
- Hand Pendant with Swivel Mount Assembly
- Standard OR Accessory Rails
- Automatic Power Floor Locks
- Stainless Steel Shrouded Base

Optional Accessories

REF	
6900-21	Stent Tray
6900-12	Radiolucent Single Arm Board
6900-20	Auxiliary Clamp
6900-25	Radiolucent AV Fistula Board
6900-23	Rail Mounted I.V. Pole
6800-350	Drape Rod
6900-51	Universal Foot Board



30031 Ahern Avenue
Union City, CA 94587-1234 USA
Telephone: 510-429-1500
Toll Free: 800-777-4674
Fax: 510-429-8500
Outside USA: +1-510-429-1500
mizuho.com



Note: Mizuho OSI is constantly improving its products. All specifications are subject to change without notice. • Tempur-Pedic® is a registered trademark of Tempur-Pedic North America, LLC
• Mizuho OSI is a Delaware Corporation. Manufactured in the USA.